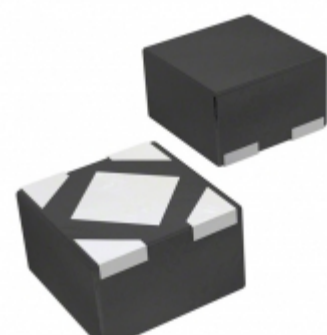


## BU25JA2MNVX-CTL



**Part Number:** BU25JA2MNVX-CTL  
**Manufacturer:** LAPIS Semiconductor  
**Description:** IC REG LINEAR 200MA SSON004R1010  
**Data sheet:** [SSON004R1010 Taping Spec](#)  
[BUxxJA2MNVX-C Series](#)

**RoHS Status:** Lead free / RoHS Compliant  
**Ship From:** Hong Kong  
**Shipment Way:** DHL/Fedex/TNT/UPS/EMS

Images are for reference only.  
 See Product Specifications for product details.  
 Buy BU25JA2MNVX-CTL with confidence from  
 Component-World.HK, 1 Year Warranty

[Request For Quotation](#)

### PRODUCT PARAMETER

<b>Part Number</b>	BU25JA2MNVX-CTL	<b>Manufacturer</b>	LAPIS Semiconductor
<b>Description</b>	IC REG LINEAR 200MA SSON004R1010	<b>Lead Free Status / RoHS Status</b>	Lead free / RoHS Compliant
<b>Quantity Available</b>	240722 pcs	<b>Data sheet</b>	<a href="#">SSON004R1010 Taping Spec</a> <a href="#">BUxxJA2MNVX-C Series</a>
<b>Category</b>	<a href="#">Integrated Circuits (ICs)</a>	<b>Voltage Dropout (Max)</b>	620V @ 200mA
<b>Voltage - Output (Min/Fixed)</b>	2.5V	<b>Voltage - Output (Max)</b>	-
<b>Voltage - Input (Max)</b>	6V	<b>Supplier Device Package</b>	SSON004R1010
<b>Series</b>	Automotive, AEC-Q100	<b>Protection Features</b>	Over Current, Over Temperature
<b>Packaging</b>	Cut Tape (CT)	<b>Package / Case</b>	4-UDFN Exposed Pad
<b>PSRR</b>	70dB (1kHz)	<b>Output Type</b>	Fixed
<b>Output Configuration</b>	Positive	<b>Other Names</b>	BU25JA2MNVX-CTLCT
<b>Operating Temperature</b>	-40°C ~ 125°C	<b>Number of Regulators</b>	1
<b>Mounting Type</b>	Surface Mount	<b>Moisture Sensitivity Level (MSL)</b>	1 (Unlimited)
<b>Manufacturer Standard Lead Time</b>	17 Weeks	<b>Lead Free Status / RoHS Status</b>	Lead free / RoHS Compliant
<b>Detailed Description</b>	Linear Voltage Regulator IC Positive Fixed 1 Output 2.5V 200mA SSON004R1010	<b>Current - Quiescent (Iq)</b>	90µA
<b>Current - Output</b>	200mA	<b>Control Features</b>	ON/OFF

Component-World.com is a Reliable Stocking Distributor of Electronic Components. We specialize in all LAPIS Semiconductor series electronic components. We have 240722 pieces of LAPIS Semiconductor BU25JA2MNVX-CTL in stock available now. Request a quote from electronics components distributor at Component-World.com, our sales team will contact you within 24 hours.  
 RFQ Email: info@Components-World.com

### RELATED PRODUCTS

	<b>Part#:</b> <a href="#">BU25H08-M3/A</a> <b>Description:</b> BRIDGE RECT 1P 800V 3.5A ISOCINK	<b>Manufacturers:</b> <a href="#">Electro-Films (EFI) / Vishay</a>	<a href="#">RFQ</a>
	<b>Part#:</b> <a href="#">BU25H06-E3/P</a> <b>Description:</b> BRIDGE RECT 1P 600V 3.5A ISOCINK	<b>Manufacturers:</b> <a href="#">Electro-Films (EFI) / Vishay</a>	<a href="#">RFQ</a>
	<b>Part#:</b> <a href="#">BU25H06-M3/P</a> <b>Description:</b> BRIDGE RECT 1P 600V 3.5A ISOCINK	<b>Manufacturers:</b> <a href="#">Electro-Films (EFI) / Vishay</a>	<a href="#">RFQ</a>
	<b>Part#:</b> <a href="#">BU25H06-E3/A</a> <b>Description:</b> BRIDGE RECT 1P 600V 3.5A ISOCINK	<b>Manufacturers:</b> <a href="#">Electro-Films (EFI) / Vishay</a>	<a href="#">RFQ</a>
	<b>Part#:</b> <a href="#">BU25TD3WG-TR</a> <b>Description:</b> IC REG LINEAR 2.5V 200MA 5SSOP	<b>Manufacturers:</b> <a href="#">LAPIS Semiconductor</a>	<a href="#">RFQ</a>
	<b>Part#:</b> <a href="#">BU25TD2WNVX-TL</a> <b>Description:</b> IC REG LIN 2.5V 200MA 4SSON	<b>Manufacturers:</b> <a href="#">LAPIS Semiconductor</a>	<a href="#">RFQ</a>
	<b>Part#:</b> <a href="#">BU25UA3WNVX-TL</a> <b>Description:</b> IC REG LIN 2.5V 300MA 4SSON	<b>Manufacturers:</b> <a href="#">LAPIS Semiconductor</a>	<a href="#">RFQ</a>
	<b>Part#:</b> <a href="#">BU25H08-E3/A</a> <b>Description:</b> BRIDGE RECT 1P 600V 3.5A ISOCINK	<b>Manufacturers:</b> <a href="#">Electro-Films (EFI) / Vishay</a>	<a href="#">RFQ</a>
	<b>Part#:</b> <a href="#">BU25SA4WGWL-E2</a> <b>Description:</b> IC REG LIN 2.5V 200MA 4UCSP50L1	<b>Manufacturers:</b> <a href="#">LAPIS Semiconductor</a>	<a href="#">RFQ</a>
	<b>Part#:</b> <a href="#">BU25H08-E3/P</a> <b>Description:</b> BRIDGE RECT 1P 600V 3.5A ISOCINK	<b>Manufacturers:</b> <a href="#">Electro-Films (EFI) / Vishay</a>	<a href="#">RFQ</a>
	<b>Part#:</b> <a href="#">BU25H08-M3/P</a> <b>Description:</b> BRIDGE RECT 1P 600V 3.5A ISOCINK	<b>Manufacturers:</b> <a href="#">Electro-Films (EFI) / Vishay</a>	<a href="#">RFQ</a>
	<b>Part#:</b> <a href="#">BU26156RFS-E2</a> <b>Description:</b> IC AUDIO CODEC 24BIT 44HTSSOP	<b>Manufacturers:</b> <a href="#">LAPIS Semiconductor</a>	<a href="#">RFQ</a>
	<b>Part#:</b> <a href="#">BU25105S-M3/45</a> <b>Description:</b> RECTIFIER BRIDGE 25A 1000V BU-5S	<b>Manufacturers:</b> <a href="#">Electro-Films (EFI) / Vishay</a>	<a href="#">RFQ</a>
	<b>Part#:</b> <a href="#">BU25TA2WNVX-TR</a> <b>Description:</b> IC REG LINEAR 2.5V 200MA 4SSON	<b>Manufacturers:</b> <a href="#">LAPIS Semiconductor</a>	<a href="#">RFQ</a>
	<b>Part#:</b> <a href="#">BU25105S-E3/45</a> <b>Description:</b> RECTIFIER BRIDGE 1000V 25A BU-5S	<b>Manufacturers:</b> <a href="#">Electro-Films (EFI) / Vishay</a>	<a href="#">RFQ</a>
	<b>Part#:</b> <a href="#">BU2624AF-E2</a> <b>Description:</b> IC PLL FREQ SYNTHESIZER SOP20 TR	<b>Manufacturers:</b> <a href="#">LAPIS Semiconductor</a>	<a href="#">RFQ</a>
	<b>Part#:</b> <a href="#">BU25H06-M3/A</a> <b>Description:</b> BRIDGE RECT 1P 600V 3.5A ISOCINK	<b>Manufacturers:</b> <a href="#">Electro-Films (EFI) / Vishay</a>	<a href="#">RFQ</a>
	<b>Part#:</b> <a href="#">BU26154MUV-E2</a> <b>Description:</b> IC AUDIO CODEC 24BIT 40VQFN	<b>Manufacturers:</b> <a href="#">LAPIS Semiconductor</a>	<a href="#">RFQ</a>
	<b>Part#:</b> <a href="#">BU25SD2MG-MTR</a> <b>Description:</b> IC REG LINEAR 2.5V 200MA 5SSOP	<b>Manufacturers:</b> <a href="#">LAPIS Semiconductor</a>	<a href="#">RFQ</a>
	<b>Part#:</b> <a href="#">BU25TA2WHFV-TR</a> <b>Description:</b> IC REG LINEAR 2.5V 200MA HVSOF5	<b>Manufacturers:</b> <a href="#">LAPIS Semiconductor</a>	<a href="#">RFQ</a>

### Related keywords for BU25JA2MNVX-CTL

LAPIS Semiconductor BU25JA2MNVX-CTL	BU25JA2MNVX-CTL distributor	BU25JA2MNVX-CTL supplier	BU25JA2MNVX-CTL price
BU25JA2MNVX-CTL download datasheet	BU25JA2MNVX-CTL datasheet	BU25JA2MNVX-CTL stock	buy BU25JA2MNVX-CTL
LAPIS Semiconductor BU25JA2MNVX-CTL	Kionix Inc. BU25JA2MNVX-CTL	Rohm Semiconductor BU25JA2MNVX-CTL	